

TENTS FOR COVID-19 RESPONSES

PACKAGES FOR ESTABLISHMENT OF
SHELTER / ISOLATION CENTERS
AND
HOSPITAL/MEDICAL CENTERS

PREPARED BY



NEPAL TENT AND TARPAULIN PVT. LTD.

Balaju Industrial District, Balaju, Kathmandu, Nepal

Tel : +977-1-4350831 / 4356533 (O), 4356649 (F)

E-mail: nepaltent7@gmail.com/

Website: www.nepaltent.com.np (under maintenance)

May 2021

COVID -19 Response

Preparation of Isolation and Treatment Centers

BACKGROUND

We all are aware that Nepal is overwhelmed by surge of Covid-19. The cases are enormously increasing day by day. As per the latest report, more than 8,500 new cases have arisen with more than 50 death cases in a day, whereas, at the same time, the hospitals are being fully occupied and there is already an immense shortfall of spaces for accommodation of the victimized people and as well as for the isolation centers.

To cope-up with the aforementioned scenario, Nepal Tent and Tarpaulin Pvt. Ltd. (NTT), the first tent manufacturing company of the country who has been serving the country for last 40 years, specifically during emergencies whether it be the earthquake or floods emergencies or be the peace keeping missions, has designed 2 packages for: i) Isolation Centers and (ii) Treatment centers. These packages are practiced globally during the pandemic situations and the emergency responses to establish the health camps.

Package 1: Preparedness of Isolation Centers

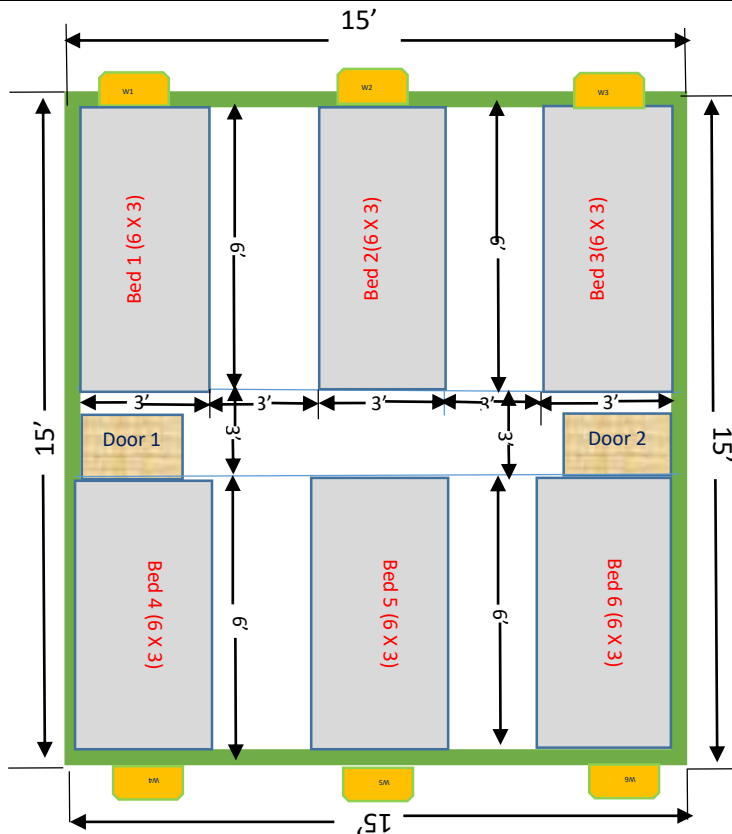
Considering the nature of the Covid-19 pandemic, NTT, has designed a 15' X 15' shelter tent (see picture) for the accommodation of 6 people with appropriate social distancing. In this tent, the 6'X3' beds can be set-up at the distance of minimum 3 feet (see layout design).



Picture : Shelter Tent

Let us be prepared on time to prevent a Humanitarian Disaster in Nepal

LAYOUT DESIGN



The layout design clearly depicts that the 6 beds of size 6X3 feet can be fitted with a gap of minimum 3 feet between each bed and a walking distance of 3 feet across the doors. The tent is designed with 2 doors and 6 windows for sufficient air flow and ventilation. The camps can be established with a required number of tents as per the accommodation required, based on the number of patients and land available. The Package comprises of a set of 1 shelter tent, 2 toilet tents, 1 shower tent and 1 Store tent and 1 canopy tent.

DETAIL SPECIFICATIONS

i. Main Tent (15' X 15' Shelter/Isolation Tent) to accommodate patients

Name of Product: SHELTER / ISOLATION TENT

PRODUCT CODE: NTT 001

Size			
Length	Breadth	Centre Height	Side Wall Height
15 ft	15 ft	9 ft	6 ft

Specification							
Main Tent (15' X 15') Shelter/Isolation Tent					OPTIONAL ITEMS		
Fabric	Colour	Frame	Side Bars	Doors/Windows	Ground Sheet	Beds	Mattress
Rubberized (water repellent)	As per availability	Iron Frame	Yes, all sides	Door - 2 Windows -6	Poly Ethylene Sheet	Folding Bed (Camp Cot)	Size 6' X 3' Thickness – 3' With 1 pillow, 2 Bed sheets, 2 pillow covers

Let us be prepared on time to prevent a Humanitarian Disaster in Nepal

ii. Toilet Tent and Shower Tent (Recommended) – At least, 2 toilets tents (1 each for two patients) 1 shower tents are recommended to include in the package.

Name of Product:
TOILET AND SHOWER TENT
Product code: NTT 008

Size		
Length	Breadth	Height
4 ft	4 ft	6 ft



Specification							
Toilet and Shower Tent (4' X 4'X6')					OPTIONAL ITEMS		
Fabric	Colour	Frame	Side Bars	Doors/Windows	Ground Sheet	PVC water tank	Others
Rubberized (water repellent)	As per availability	Iron Frame	Yes, all sides	Door - 1 Windows –As per client's requirement	Poly Ethylene Sheet	20 liter capacity, 1 each for a toilet tent and a shower tent	Commode for toilet Tent

iii. Store Tent (Recommended) – A store tent is recommended to include in the package for the purpose of storage of medicines, oxygen cylinders and other medical items.

Name of Product: STORE TENT
Product code: NTT 007

Size			
Length	Breadth	Centre Height	Side Wall Height
10 ft	10 ft	7.5 ft	4 ft



Specification					
Store Tent (10' X 10')					OPTIONAL ITEMS
Fabric	Colour	Pole	Side Bars	Doors/Windows	Ground Sheet
Rubberized (water repellent)	As per availability	Iron Poles	Yes, all sides	Door - 1 with lock Windows -optional	Poly Ethylene Sheet

iv. Canopy Tents (Recommended): The canopy tents can be used for the purpose of office and/or stay of doctors and nurses

Name of Product: CANOPY TENT
Product code: NTT 005

Size		
Length	Breadth	Height
10 ft	10 ft	7 ft



Let us be prepared on time to prevent a Humanitarian Disaster in Nepal

Specification					
Canopy Tent (10' X 10')				OPTIONAL ITEMS	
Fabric	Colour	Frame	Doors/Windows	Side Bars	Ground Sheet
Rubberized (water repellent)	As per availability	Iron Frames	Door – Yes – front side Windows -optional	3 sides	Poly Ethylene Sheet

PACKAGE 1: COST STRUCTURE

FOR THE COST STRUCTURE, PLEASE CORRESPOND TO E-MAIL:
nepaltent15@gmail.com

Package 2: Preparedness of Health Centers

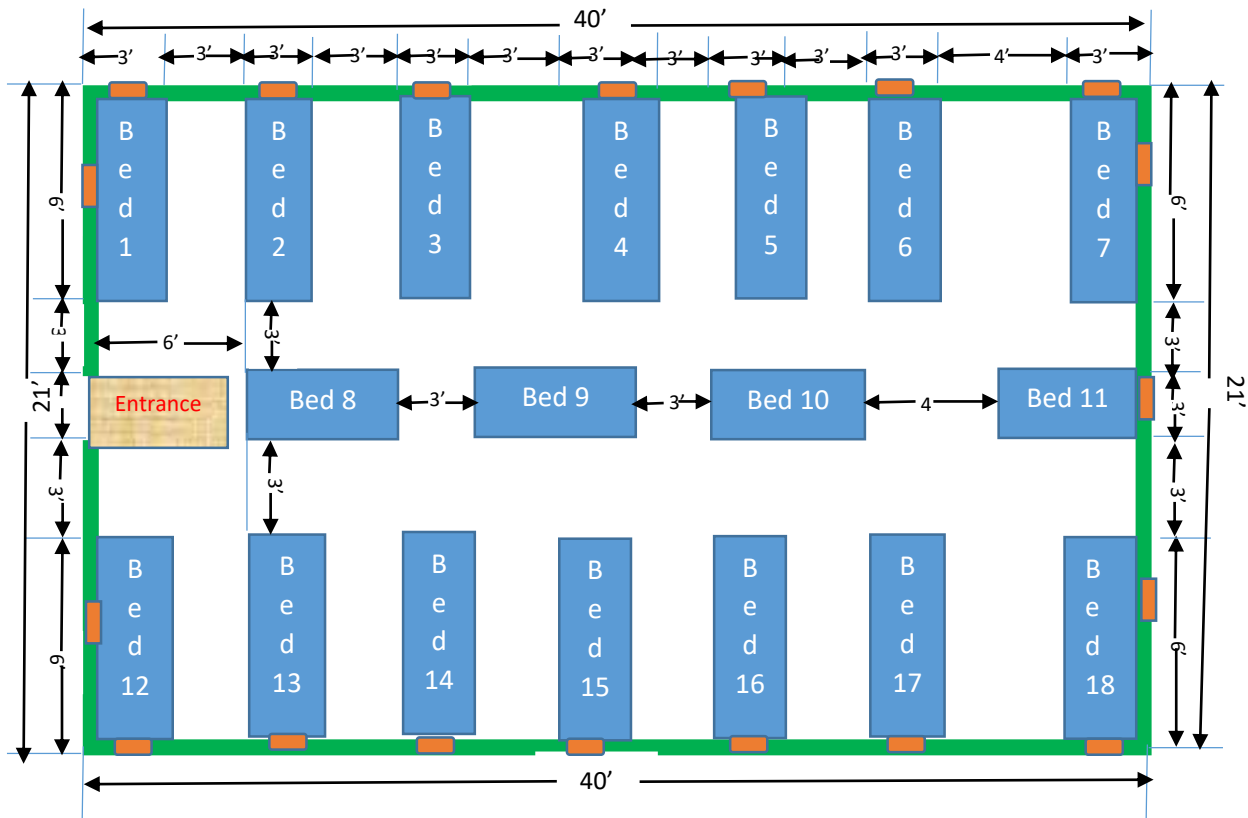
For the purpose of the Treatment Centers, NTT has designed a 40' X 21' hospital/medical tent (see picture 1). This tent can accommodate patients with an arrangement of 18 beds (see Layout design).



Let us be prepared on time to prevent a Humanitarian Disaster in Nepal

LAYOUT DESIGN

The layout design depicts that 18 beds of size 6X3 feet can be fitted with a gap of minimum 3 feet between each bed and a walking distance of minimum 3 feet. The tent is designed with an entrance at the center for the front sided whereas the windows can be sited in the required number for sufficient air flow and ventilation. The camps can be established with a required number of tents as per the accommodation required, based on the number of patients and land available. The Package comprises of a set of 1 hospital tent, 6 toilet tents, 2 shower tents and 2 Store tents and 2 canopy tents.



Let us be prepared on time to prevent a Humanitarian Disaster in Nepal

DETAIL SPECIFICATIONS

i. Main Tent (15' X 15' Shelter/Isolation Tent) to accommodate patients

Name of Product: HOSPITAL/MEDICAL TENT

PRODUCT CODE: NTT 013

Size			
Length	Breadth	Centre Height	Side Wall Height
40 ft	21 ft	12 ft	6 ft

Specification							
Main Tent (40' X 21') Hospital/Medical Tent					OPTIONAL ITEMS		
Fabric	Colour	Frame	Side Bars	Doors/Windows	Ground Sheet	Beds	Mattress
Rubberized (water repellent)	As per availability	Iron Frame	Yes, all sides	Entrance Door - 1 Windows –As per requirement	Poly Ethylene Sheet	Folding Bed (Camp Cot)	Size 6' X 3' Thickness – 3' With 1 pillow, 2 Bed sheets, 2 pillow covers

Note: Please see the aforementioned paragraphs, under Package 1, for detail specification and purpose of the toilet tent, shower tent, storage tent and the canopy tent.

PACKAGE 2 : COST STRUCTURE

FOR THE COST STRUCTURE, PLEASE CORRESPOND TO E-MAIL:
nepaltent15@gmail.com

Let us be prepared on time to prevent a Humanitarian Disaster in Nepal

ORDER SHEET FOR PACKAGE 1					
NAME OF COMPANY:					Date
ADDRESS					YYYY/MM/DD
NAME OF CONTACT PERSON:				CONTACT NUMBER:	
				10 digit mobile no.	
S. N.	Description	Required (Y/N)	Unit	Order Quantity	Remarks
1	Shelter / Isolation Tent with Frame and other accessories required to install		No. of Set		
	Optional Items: i. Ground Sheet (15' X 15')		Nos.		
	ii. Folding Beds (6' X 3')		Nos.		
	iii. Mattress with pillow, bed sheets and pillow covers		Sets		
2	Toilet Tent with Frame and other accessories required to install		Sets		
	Optional Items: i. Ground Sheet (4' X 4')		Nos.		
	ii. Commode		Nos.		
	iii. PVC Bucket		Nos.		
3	Shower Tent with Frame and other accessories required to install		Sets		
	Optional Items: i. Ground Sheet (4' X 4')		Nos.		
	iii. PVC Bucket		Nos.		
4	Store Tent with Poles and other accessories required to install		Sets		
	Optional Items: i. Ground Sheet (10' X 10')		Nos.		
5	Canopy Tent with Frame and other accessories required to install		Sets		
	Optional Items: i. Side Bars (3 sides)		3 sides - Sets		
	ii. Ground Sheet (10' X 10')		Nos.		

<p>Order Placed by:</p> <p>Signature _____</p> <p>Name _____</p> <p>Title _____</p>	<p>Company Seal</p>
--	---------------------

Let us be prepared on time to prevent a Humanitarian Disaster in Nepal

ORDER SHEET FOR PACKAGE 2					
NAME OF COMPANY:					Date
ADDRESS					YYYY/MM/DD
NAME OF CONTACT PERSON:				CONTACT NUMBER:	10 digit mobile no.
S. N.	Description	Required (Y/N)	Unit	Order Quantity	Remarks
1	Hospital/Medical Tent with Frame and other accessories required to install		No. of Set		
	Optional Items: i. Ground Sheet (15' X 15')		Nos.		
	ii. Folding Beds (6' X 3')		Nos.		
	iii. Mattress with pillow, bed sheets and pillow covers		Sets		
2	Toilet Tent with Frame and other accessories required to install		Sets		
	Optional Items: i. Ground Sheet (4' X 4')		Nos.		
	ii. Commode		Nos.		
	iii. PVC Bucket		Nos.		
3	Shower Tent with Frame and other accessories required to install		Sets		
	Optional Items: i. Ground Sheet (4' X 4')		Nos.		
	iii. PVC Bucket		Nos.		
4	Store Tent with Poles and other accessories required to install		Sets		
	Optional Items: i. Ground Sheet (10' X 10')		Nos.		
5	Canopy Tent with Frame and other accessories required to install		Sets		
	Optional Items: i. Side Bars (3 sides)		Sets		
	ii. Ground Sheet (10' X 10')		Nos.		

<p>Order Placed by:</p> <p>Signature _____</p> <p>Name _____</p> <p>Title _____</p>	<p>Company Seal</p>
--	---------------------